



The Highland Heartbeat

Highland, a Place to be Seen, Known, and Loved

Sunday, December 7, 2025

Carol with Highland!

Sunday, December 14 at 2:00 PM

Willow Valley Communities

We will carpool from Highland at 1:15 PM.

Tuesday, December 16 at 6:45 PM

The Long Community

We will meet in the Hudson Room at

6:30 PM to walk to The Long Community!

Please RSVP by contacting Wendy Hershey at wwhershey316@gmail.com.



Quilters' Christmas Sale

Today, December 7 &
Sunday, December 14

Before worship, stop by the quilters' table in the narthex and shop for a variety of **handmade** items, including stocking stuffers, hostess gifts, table runners, wall hangings, baby quilts, and more! Your purchases will help support women and children locally, nationally, and internationally.



On the Way to the Manger: A Family Advent-ure

Today, December 7

After worship in Fellowship Hall

Join us for a family-friendly Advent kickoff as we begin the journey toward Christmas together! We'll share lunch, build Advent wreaths, and explore the themes of **hope**, **peace**, **joy**, and **love** through hands-on storytelling and activities for all ages.

Come wonder, create, and prepare your heart for Jesus — everyone is welcome on this journey to the manger.

Women's Christmas Tea

All mothers, daughters, and grandmothers are welcome!

Saturday, December 20

Arrive at 11:30 AM | \$5 to attend

Entertainment will begin at 11:45 AM, and food will be available at 12:15 PM. We hope to see you there!



Highland Performing Arts Upcoming Concert



After the concert, join us in Fellowship Hall at **4:30 PM** for a **Patron Reception!** We truly appreciate your ongoing support of the Highland Performing Arts.

Next Sunday, December 14 at 3:00 PM

The Heritage Chorale of Lancaster

Barry Sawyer, Director

Hilites Progressive Christmas Party

Next Sunday, December 14

Appetizers — 5:30 - 7:45 PM

Desserts & Ornament Exchange — 8:00 PM

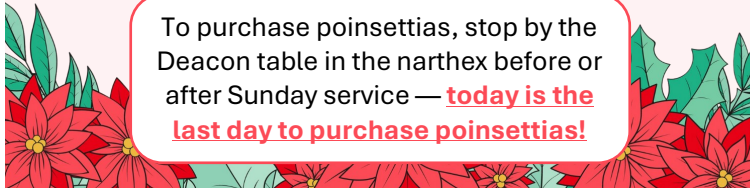
- \$10 per person to attend; please register using the QR code!
- Sign up to bring an appetizer or a dessert before **tomorrow, December 8**.
- To participate in the optional ornament exchange, bring a wrapped ornament (valued ~\$10).
- Questions? Contact Dana Mead.



Christmas Poinsettias

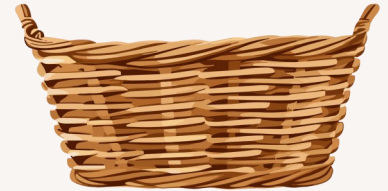
Christmas poinsettias symbolize hope and purity. One of the Deacons' many ministries is to provide you with the opportunity to order beautiful poinsettias. Poinsettias cost **\$10 each**, and can be purchased as a gift, dedicated in memory or honor of loved ones, or for your own personal enjoyment! Poinsettias will decorate the Sanctuary on **Sunday, December 21** and **Christmas Eve**.

To purchase poinsettias, stop by the Deacon table in the narthex before or after Sunday service — **today is the last day to purchase poinsettias!**



Christmas Bags for Red Rose Manor

Throughout the year, the women of Highland gather toiletries to give as Christmas gifts to the residents of **Red Rose Manor**, a local assisted living facility in Lancaster City. We are still in need of hard candy, diabetic candy, small tissue packets, and full-sized lotions, soaps, and shampoos. Please drop off your donations in the wicker basket by the food pantry near Fellowship Hall. We will fill the bags in mid-December!



Juan Calvino School in El Salvador

Highland Presbyterian Church has a deep and rich relationship with **Juan Calvino School** (located in El Salvador). Our stories have been entwined for over 2 decades. Many members of Highland have been to the school to learn, work, and connect. Now you have an opportunity to be a part of that ongoing story!

After initial conversations with school and church leadership in El Salvador, we will have an interest meeting **following worship on December 14**. This will be an opportunity to get some information and consider joining a group on a trip to El Salvador in the summer of 2026. Please plan to join us in **Room 204** if you would like to be a part of this story!



Calling all adults!

Breakfast, Lunch, & Evening Fellowship

THUR
Dec
11

Ladies Night Out

Harvest Grill | 7:00 - 9:00 pm

WED
Dec
17

Working Adult Lunch

S. Clyde Weaver | 12:00 pm

WED
Dec
17

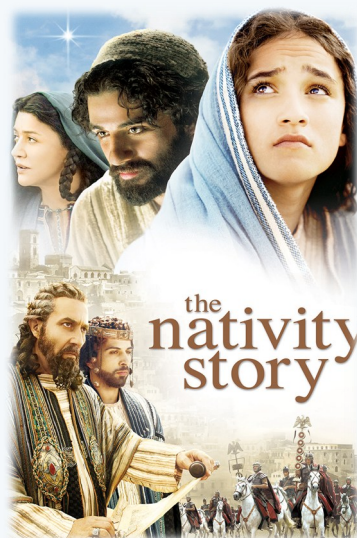
Men's Trivia Night

Stoner Grille
Dinner at 6:00 pm | Trivia at 7:00 pm

Looking for a breakfast bible study, book club, or Sunday school offerings? Have a question about an event? Contact events@highlandpc.org

Lunch & Movie: The Nativity Story

Are you looking to get past the commercialism and experience the real meaning of Christmas? Mark your calendars for **Sunday, December 21** at **11:15 AM** and join us for lunch and a movie! It will take you back in time to view Mary and Joseph in Galilee, the angel coming to Mary, the long, difficult journey to Bethlehem, the birth. The movie is Biblical, yet brings the time and the people to life.



Event Details

- The movie is appropriate for youth group age and older. Plans are being made for a nursery and movie for the younger kids at the same time.
- Lunch will be served right after worship, followed by the movie, *The Nativity Story*. Come at 11:15 AM, and leave ready to truly celebrate Christmas by 2:00 PM!
- Please sign up in the narthex, or using the QR code so we have a lunch count.



<https://forms.gle/XK9WBVVE7indNGdCA>

Christmas Eve at Highland

Family Christmas Pageant | 4:30 PM

Families are invited to a joyful, interactive Christmas Eve service where every child can be part of the story! Children may choose a provided costume (or bring their own) as we retell the Christmas Story through a simple, no-rehearsal pageant woven with carols, a creative biblical retelling, and a candlelit Silent Night in the Sanctuary. This low-stress pageant allows kids to express their joy and feel seen, known, and loved as they choose their character and join in the unfolding of the Christmas story.



Traditional Candlelight Service | 8:00 PM

Our Traditional Candlelight Christmas Eve Service will be a beautiful and reverent celebration of Christ's birth. This service features scripture, carols, choir, and a thoughtful message as we enter the wonder of the Nativity story together. We will conclude with the beloved tradition of candlelight and "Silent Night," filling the Sanctuary with warmth and hope as we welcome the Christ Child once again. All are welcome to this meaningful evening of worship, reflection, and joy.

Reverse Advent Calendar

Beans & rice are two popular food staples offered to those in need at **Lancaster Food Hub**. Don't forget to add the **Week 2** items to your shopping list and bring them back to the church. Let's help our neighbors who are food insecure this Advent season!

- The full calendar is available on the kiosk next to the Heartbeat, or on the round table in the narthex.
- You can bring your food items each Sunday during Advent, or fill a box of your own and bring it in on Christmas Eve.
- Collection boxes are located in the narthex and the office reception area.
- For questions, see Deb Peterson.

Week 2

December 7	Canned tuna
December 8	Jar of applesauce
December 9	Canned beans
December 10	Package of rice (white or brown)
December 11	Ravioli or SpaghettiOs (pull-tab can)
December 12	Canned fruit (individual servings or pull tab cans)
December 13	Spaghetti sauce

Breakfast with Santa

The Long Community

Next Saturday, December 13

8:30 to 10:30 AM

Join our neighbors at The Long Community for a heartwarming morning filled with joy, laughter, and holiday cheer! Bring the kids and make unforgettable memories as you enjoy a delicious breakfast with Santa Claus himself!



Please RSVP by calling
(717) 381-4900.

Earth Care Partner Events



THUR Dec 18	6:00 - 7:00 PM Nature Hour: Stories of the Conestoga River	
SAT Jan 3	1:00 - 3:00 PM New Year Hike at High Family Nature Preserve	
SAT Jan 10	1:00 - 4:00 PM Give Back to Nature at Graham Nature Preserve	

Highland Happenings

On November 22 — surrounded by family and friends — Bill Sherriff and Lillie Weah were joined in marriage in the beautiful chapel many of you helped bring to life. This is a wonderful opportunity to celebrate the beginning of Bill and Lillie's life together. It is also an opportunity to celebrate our chapel as a place of worship, prayer, and sacred celebration. We give thanks for the generosity, vision, and hard work that made the renovation possible, and we rejoice that the space is blessing our congregation in meaningful ways.



Worship



This Week's Scripture

Isaiah 60:1-3, Luke 2:8-14

"Sermon in Song:
Hodie Christus Natus Est"

Upcoming Preaching Schedule

December 14

Rev. Allison Beaulieu

Upcoming Events

Thursday, December 11

7:00 PM Ladies Night Out at Harvest Grill

Sunday, December 14

9:00 AM Quilters' Christmas Sale

3:00 PM The Heritage Chorale of Lancaster

2:00 PM Christmas Caroling at Willow Valley

5:30 PM Hilites Progressive Christmas Party

Tuesday, December 16

6:45 PM Christmas Caroling at The Long Community

Wednesday, December 17

12:00 PM Working Adult Lunch at S. Clyde Weaver

6:00 PM Men's Trivia Night at Stoner Grille

*If you haven't already, pick up a copy of the **2025 Advent Booklet** in the Narthex, or by contacting the office. The devotions in the booklet will also be sent weekly by e-mail.*

Worship Times

Ignite Worship | 9:30 AM

Traditional Worship | 10:00 AM

Program Staff

Senior Pastor — Rev. Allison Beaulieu

Pastor for Congregational Care — Rev. Dr. Ann Osborne

Associate Pastor for Missions & Discipleship — Rev. Matt Drumheller

Parish Associate — Rev. Dr. Bob Burns

Parish Associate — Rev. Ken Osborne

Music Director — Dr. Paul Thorlakson

Ignite Worship Leader — Dr. Jeffrey Martin

IT/Media Coordinator & Organist — Jonathan Lefever

Director of Children, Youth, & Family Ministries — Sarah Hostetter



Office Hours

Monday - Thursday

9:00 AM to 3:00 PM

Friday

9:00 AM to 12:00 PM

Contact Information

717-569-2651

www.HighlandPC.org

500 East Roseville Road

Lancaster, Pennsylvania 17601

For staff contact information, visit our website at www.highlandpc.org and go to **About Us > Staff**, or ask the reception desk for a copy of our Staff & Committee Contacts brochure.

*Highland: A Place to be
Seen, Known, & Loved*

Year to Date Finances

As of November 30, 2025

Expenses exceed revenues by \$90,000

	Actual	Budget	Difference
Revenue	\$1,098,000	\$1,334,000	- \$236,000
Expenses	\$1,188,000	\$1,311,000	- \$123,000