

#### OFFICE HOURS

Mon - Thurs 9:00AM - 5:00PM  
Friday 9:00AM - 2:00PM

#### WORSHIP TIMES

10:00AM - Traditional Worship  
in the Sanctuary  
10:15AM - Contemporary Worship  
in Fellowship Hall  
12:30PM - Lighthouse Imani Church  
in the Lounge

#### PASTORAL STAFF

##### Senior Pastor/ Head of Staff:

Rev. Dr. Roger Rabey

##### Assoc. Pastor for Congregational Care:

Rev. Dr. Ann Osborne

##### Assoc. Pastor for Mission & Family Ministry:

Rev. Dr. Noé Juárez

##### Parish Assoc. for Visitation:

Rev. Dr. Robert Burns

#### Please Recycle!

Finished reading the  
Heartbeat already? Don't  
throw it away! Please place  
them at the Welcome Center  
in the Narthex.

Have an announcement or story  
idea for The Heartbeat? Contact  
[bulletin@highlandpc.org](mailto:bulletin@highlandpc.org)

For more information please  
visit our web site:  
[www.highlandpc.org](http://www.highlandpc.org)

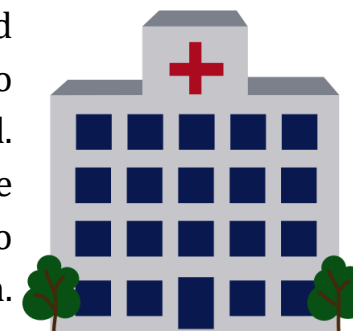


Highland Presbyterian Church is hiring a part time **food/kitchen coordinator**. Duties include managing all kitchen operations, coordinate food and fellowship events for the church, working with catering services for larger events and provide coordination and

management for all actions, operations, policy implementation and leadership of the Food and Fellowship Leadership Team. Schedule will vary weekly, Sundays required, average 8-12 hours/week. Send resume to [employment@highlandpc.org](mailto:employment@highlandpc.org) or call the church office at 717-569-2651.

#### Hospital Visits

As many of you may know, as a Highland staff we make daily hospital visits to members who may be in a local hospital. In the past, we were able to contact these hospitals and obtain information as to who has been admitted from our church.



However, with new regulations put in place from HIPPA we are now unable to do this. If you, a family member, or a friend is in the hospital please do not hesitate to call the church office or send an e-mail to inform us so one of our ministers can visit that member. Thank you!

## Adult Christian Education

### Sundays

#### Faith Café

Room: Lounge | 11:15-12:00

A discussion group that looks at current topics through the lens of scripture and our faith. We use a newsletter, the Wired Word to provide topics and discussion points.

#### Worship Schedule

Traditional Service | 10:00AM

Contemporary Service | 10:15AM

On August 5th we will have our final early summer 8:00AM informal communion service in the Lounge.

#### End-of-Summer/Kick-off

**Sunday: August 26th.** - After the service we will have games and activities for children and youth provided by Camp Krislund. We will have live music performance by Corsair Blue Jazz Orchestra. Dancing is encouraged. And of course delicious catered BBQ for everyone. This is an outdoor event and we will have big tents. We also encourage you to bring your canopy if you have one.

## Lemonade Concert Series

#### August 2

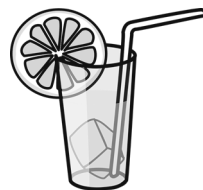
Lancaster British Brass Band

#### August 9

Lancaster Marimba Ensemble

#### August 16

Servant Stage Company



## Upcoming Events

**Senior Ministry Breakfast** - All seniors (couples and singles!) are welcome on the first Thursday of each month for the Senior Ministry breakfast! The next meeting will be at the Oregon Dairy on Thursday, **August 2nd** at 9:00AM. We hope to see you there!

**ARE YOU A HILITE?** Our Hillites group ranges in age from about late 50's through 70's. It's purpose is fellowship and fun (and usually food!) Our annual pool party is at Jim and Connie Tower's home on Sunday, **August 5** starting with lunch. YOU are invited to join us! Contact Connie or Jim at 717-898-3820 or [jnctowers@gmail.com](mailto:jnctowers@gmail.com), Judy Eyster 717-330-4280 or Gail Robinson, [gailarobinson96@gmail.com](mailto:gailarobinson96@gmail.com). for more information.

**International Sunday** - On Sunday, **August 19** Highland will join with the Lighthouse Imani Presbyterian Church from East Africa and the Hispanic Resurrection Chapel Church for a single service at 10:00 A.M. We will worship in English, Spanish and Swahili. Following the service there will be a **potluck** lunch in Fellowship Hall with Latino food prepared by Pastor Maria Mada. Highland members will be requested to bring salads and deserts to complement the lunch. Registration for the lunch can be completed each Sunday through August 12<sup>th</sup> in the Narthex or on the Highland website.

**New Members Class** - Are you considering membership at Highland Presbyterian Church? Attend our next prospective new members class on **Saturday, September 15**, from 8:30 to 10:00 a.m. Childcare will be provided. We then will welcome new members on **Sunday, September 23**, at either of our two worship services. Mark your calendars to save these dates! In the meantime, please feel free to get involved! To register, contact Larry and Anita Ewing (717-824-3318) or the church office (717-569-2651).

## Volunteer Opportunities

**Highland Begins New Visitation & Care Ministry** - Visitors will support hospital, rehabilitation and home visits, as well as hospice visitation and in-depth grief support in specific instances. Dr. Ann Osborne will train and coordinate this new pastoral care and outreach ministry. Visitors will engage in monthly meetings to engage with the Ministers for support and prayer. Contact Dr. Osborne for more information at 717-327-6199 (cell) or 717-569-2651 ex: 222 at Highland or you can send an email to her at [annosborne@highlandpc.org](mailto:annosborne@highlandpc.org)

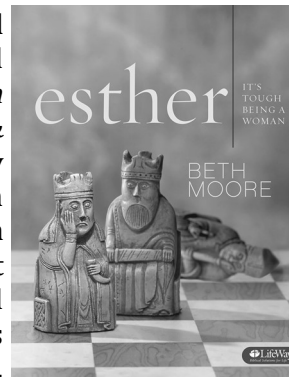
**Lancaster County Council of Churches** - We are blessed to be receiving more donated produce to use in our food distributions, however, we do need to go and pick the items up which has left us with a bit of a challenge in having enough time to get these additional pick ups done as well as the other responsibilities of the Food Hub. So we are looking for a few volunteers who might be interested in doing some of these "pick ups." It entails volunteers on Tuesdays, Wednesdays and Fridays in the morning for anywhere from 1-4 hours. All pickups will be completed before noon. Must be comfortable driving a Sprinter van and must be able to lift 40 pounds. For more information? Call (717) 291-2261

**Help the Global Outreach Committee!** The Global Outreach Committee is looking for 1 or 2 volunteers to help produce the Alternative Gift Catalog. The project runs from August to early November. The only requirement is the ability to use Microsoft Word. The Alternative Gift Catalog has historically raised several thousand dollars for local, national, and global mission projects. Your help will assist many people around the world in areas such as education, hunger, and disaster assistance. If you are interested, please contact Ian Turner at 717-371-2764 or at [ukusc8591@yahoo.com](mailto:ukusc8591@yahoo.com).

**Help With Refreshments** - We are looking for 2 volunteers to help with providing cold refreshments following the services on August 5 and August 12. If you are interested please contact Rev. Dr. Ann Osborne at [annosborne@highlandpc.org](mailto:annosborne@highlandpc.org) or 717327-6199.

## Announcements

**Women's DVD Study** - NEW! This summer, we will have a small group opportunity for women of all ages. We plan to use Beth Moore's *Esther: It's Tough Being A Woman*. Jan & Emily Longenecker and Barb & Dana Droz will host. It is an 11-week DVD based study with an optional workbook. We will meet on Wednesday nights for about 1 ½ hours, 7 – 8:30, from now through mid-August. The DVD will take up about half the time, and the rest will be fellowship and discussion. We know everyone will be away some this summer, so plan to come when you are in town. Contact Barb Droz to order the \$10.00 workbook at [gldroz@comcast.net](mailto:gldroz@comcast.net).



**Food Cupboard Donations** - SUMMERTIME...picnics, baseball games, Hershey Park, vacations, and leisurely days are just a few of the activities we enjoy during the summer months. However, not everyone is so fortunate; some parents are wondering where they will get food to put on the table for their children. While we enjoy our cookouts, let us not forget to donate generously to the Food Cupboard, located next to Fellowship Hall in the narthex. Monetary donations are always welcome and should be sent to the church office with a notation for the Food Cupboard. Thank you for helping to feed the hungry.

**Seeking Sunday School Teachers** - This fall we will kick off our new schedule and we are looking for Sunday school teachers! Are you interested in teaching our kids or youth? If so, please email Laurie at [lauriejuarez@highlandpc.org](mailto:lauriejuarez@highlandpc.org) or call the church office. We can help you get your clearances! Grades that still need help - Pre-K (assistant 2 times per month), 1st/2nd grade (assistant one time per month), 3rd grade (one time per month), 4th/5th grade (teacher one time per month and assistant 2 times per month), middle school (assistant or teacher onetime per month), high school (teacher one time per month) and substitutes needed for all ages! (Thank to you everyone who has already volunteered!

**Presbyterian Women collect toiletries** all year long to gift Christmas bags to underprivileged seniors in Lancaster City. As the season of summer travel approaches, please bring home all those wonderful small things the hotels provided you that are unused. We have a home for them. Hint: Stick a plastic Ziploc bag in your suitcase before you go, and fill it up, then bring it to the collection hamper by the Food Cupboard.

**Medical Equipment** - Did you know that Highland Church maintains a closet full of medical equipment including canes, walkers, and wheelchairs? The equipment can be checked out on loan by signing it out with our Receptionist, Donna Stettler or by calling her during the week at 717-569-2651. Recently all of Highland's wheelchairs have been taken without being checked out. If you have borrowed a walker, or wheelchair without checking it out with Donna, please call her to let her know you have borrowed it. If you have a walker or wheelchair that you no longer use or want, please consider donating it to Highland's Medical Equipment Closet.



## Stewardship Corner

Financial update through June

From the Finance and Stewardship Committee: here is our financial position through June:

	<u>Actual</u>	<u>Budget</u>
Total Revenues:	\$641,561	\$650,000
Total Expenses:	\$614,909	\$654,370
Revenues vs. Expenses:	\$26,652	

We thank you for your support of Highland and ask that you remain current with your pledges so that our ministries may continue to shine the light of Christ to our community. If you have not yet pledged, it's not too late. Pledge cards are available at the office or contact the Church Administrator.

### Book Sale Ending

The book sale will be ending TODAY, **July 29**. Everything will be half off!! You don't want to miss out on this great sale!

### Everyone Welcome at Quilters

**Everyone Welcome at Quilters** - The Highland Quilters are meeting throughout the summer **every Wednesday from 9 a.m. to noon**. They conclude with a shared lunch. You've seen baby quilts given at baptisms, larger quilts going off to El Salvador and Mars Hill and as gifts to honor various people. The quilts are made by the Highland quilters. Beginners and experienced quilters welcome. Stop in and see what's happening or contact Juanita Fowler at [juanita.l.fowler@gmail.com](mailto:juanita.l.fowler@gmail.com).

### Crafty Critters Schedule

The Crafty Critters meet at 10:00am in the Fellowship Hall. No cost to you, just a fun time to make things for the fall Faire!

**September 14** - Advent Candy Strips led by Juanita Fowler at Highland

**October 12** - Redo Wreaths led by Pat Rankin at Highland

## Prayer List

Family of Sara Royer (Mac Marrs' Daughter)  
Family of David Wiley  
Chris Kaufmann & Family  
Family of Barbara York  
Bill Culp & Family  
Nancy Blanken & Family  
Mary Weirich & Family

---

Barbara Arnold (Peggy Erhart's mother)

Jim Deily

Howie & Bonnie Eckhart

Addy Fenchak-Kutzner

Jean Fontes & Children

Audrey & Gene Hannum

Linda Guimond

Elaine & Bill Johnson

Irene Kimball

Jeff Klassen (brother-in-law of Jan&Jow Chestnutt)

Peggy Koelsch

Chuck Matt (Dale Matt's brother)

Friends of John McKenzie

Family & Friends of Don Philips

Ruth Philips

Jayne (neighbor of Jan & Joe Chestnutt)

Graham Rabey (Dr. Rabey's Son)

Jean Rea

Jeremiah (Kathleen Shuman's Neighbor)

Nancy Reese

Ron Reese (Elizabeth Hess's brother)

Nancy & Dave Roy

Luke Senkowski

John Sourber (Greg Sourber's dad)

Craig & Jean Stearn

Carol Wenger

Sue Young

Randy Zerr

## Staff Listing w/ Extension

Roger Rabey | Senior Pastor | 226

Ann Osborne | Associate Pastor | 222

Noé Juárez | Associate Pastor | 213

Robert Burns | Parish Associate

Jenny Kutzner | Youth Director | 228

Paul Thorlakson | Music Dir. & Organist | 217

Laurie Juárez | Children's Ministry | 218

Joanne Weaver | Nursery Coord.

Jonathan Lefever | Multimedia Info. Tech. | 229

Josh Witmer | Contemp. Music Leader | 214

Mike Nolt | Church Administrator | 224

Cassidy Godber | Communications Coord. | 211

Donna Stettler | Facility Scheduler/Admin | 210

Steve Smith | Facility Supervisor | 225

Alan Danthua | Custodian

Mike Hutchinson | Groudskeeper

Amanda Smith | Housekeeper

All staff can be reached at their highland e-mail address.

**Example:** fullname@highlandpc.org

**Connecting Through Nature** - We invite survivors and allies who walk with them to join us as we explore nature's lessons on healing trauma. The day will include time for connecting, learning, and restorative practices. Together we will explore how nature guides us on our own healing path and discover ways to honor our own unique journey through art, music, and writing. We welcome survivors to join us in a tranquil setting as we seek healing, build community and begin to create pathways for reconnection. Please consider joining us on **September 22** from 8:30-3:00PM at Gretna Glen Retreat Center (87 Old Mine Rd, Lebanon, PA). The cost is \$50 which also includes lunch. The group will be co-facilitated by trauma trained therapist, Lisa Hanna Witmer, MSW, LSW, and Deb Helt, Senior Safe Church Facilitator & Congregation Support Specialist. E-mail [LDurbin@scclanc.org](mailto:LDurbin@scclanc.org) or call 717-560-9969 ext. 254 with questions or to register.



**Circle of Hope** - What is it? Circles of Hope are safe place to which we invite survivors to share common ground with other survivors. Together, we will look at the way that our lives have been shaped not only by our stories of trauma, but by our own strength, struggle, and resilience. By exploring healing truth and hope through conversation and creative expression, we will consider the many ways that the dark or dormant period in our lives can give way to growth and new life. How does it work? The Circles will be co-facilitated by trauma-trained therapist, Lisa Hanna Witmer, MSW, LSW, and Deb Helt, Senior Safe Church Facilitator & Congregation Support Specialist. Group size will be limited to 8 participants and the cost for the series is \$125 for all 6 sessions. Some need-based scholarship assistance is available on request. Meetings will be held at Samaritan Counseling Center (1803 Oregon Pike, Lancaster, PA) from 7 to 8:30PM on the following **Thursdays: September 6 & 20, October 4 & 18, November 1&15.**